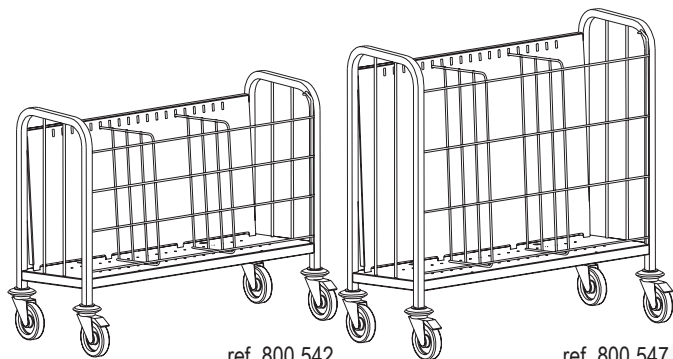


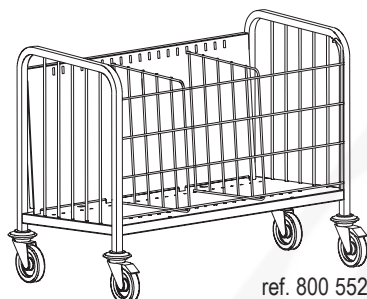


PLATE-TROLLEY WITH REMOVABLE FRONT GRID AND SEPARATION GRIDS



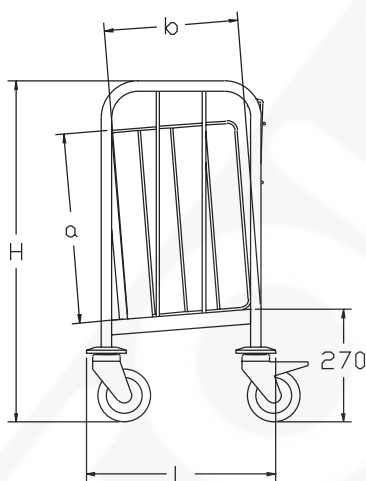
ref. 800 542

ref. 800 547

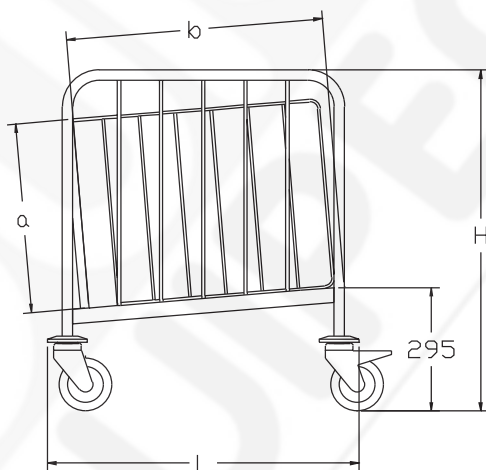


ref. 800 552

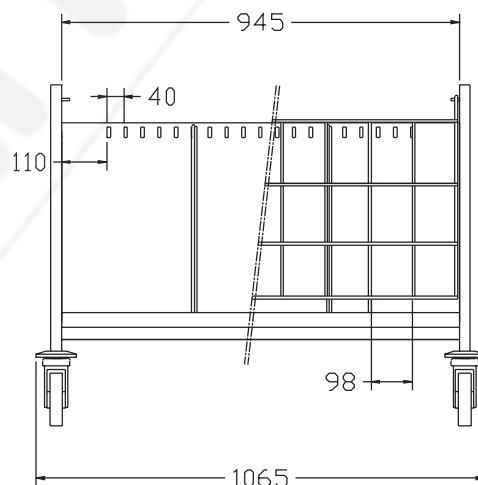
- Food quality stainless steel.
- Arched handles made of 25 x 25 mm tube.
- 4 swivel wheels Ø125 mm with polyamide cover, 2 of which are braked, non-marking tyre.
- 2 separation grid made of Ø6 mm stainless steel wire.
- Stainless steel front grid Ø6 mm can be removed and hooked on the back of the trolley when loading and unloading plates.
- Plate diameters up to Ø290 mm.
- Optional : -polyamide cover.
- additional separation grid.
- cutlery dispenser ref. 800 571.



200 and 300 plate Trolleys
(side view)



400 plate Trolleys
(side view)



All trolleys
(front view)

Number of plates	Maximum load(kg)	L (mm)	H (mm)	a (mm)	b (mm)	Trolley references	References for optional cover	Ref. for additional separation grid
200 on 3 piles	120	450	810	480	315	800 542	228 196	228 263
300 on 3 piles	180	450	1000	670	315	800 547	228 197	228 264
400 on 6 piles	240	740	810	480	610	800 552	228 198	228 265